

Ps Demo Installation Guide and User Manual

1. Connect the device with your desktop using Microsoft Active Synch
2. Copy the folder PsDemo under the device's storage card
2. Run the PSdemoSetup.msi on your computer for installing the application.

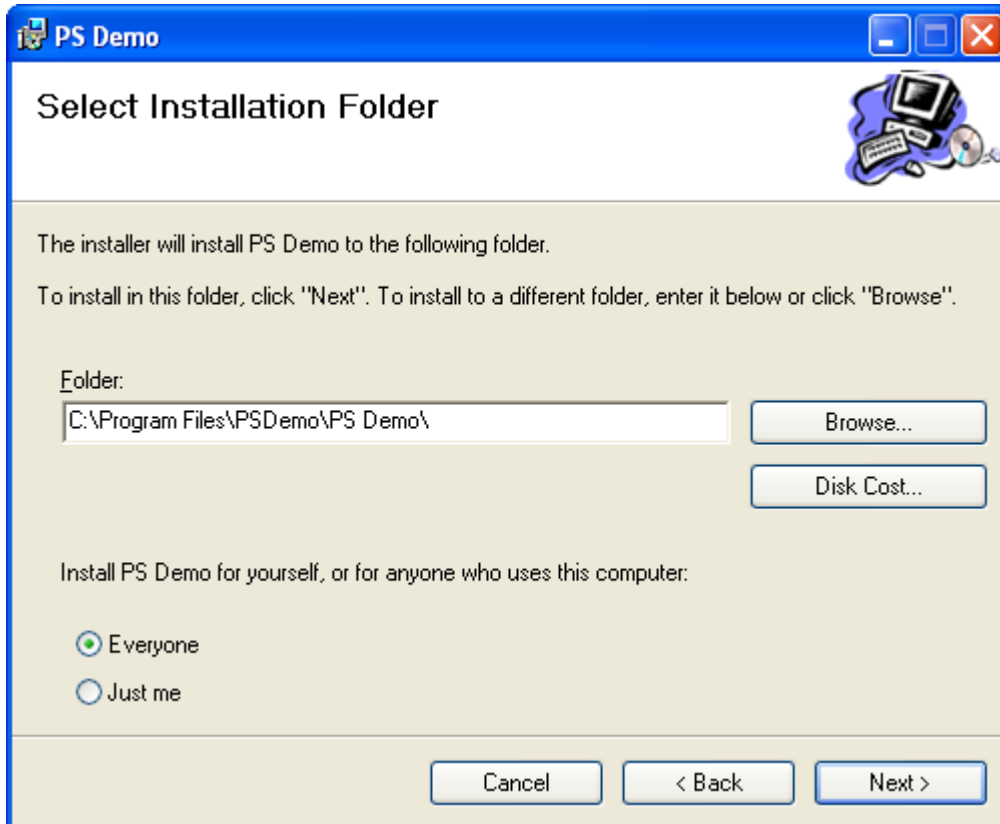


Figure1: Press <Next> to proceed with the Installation

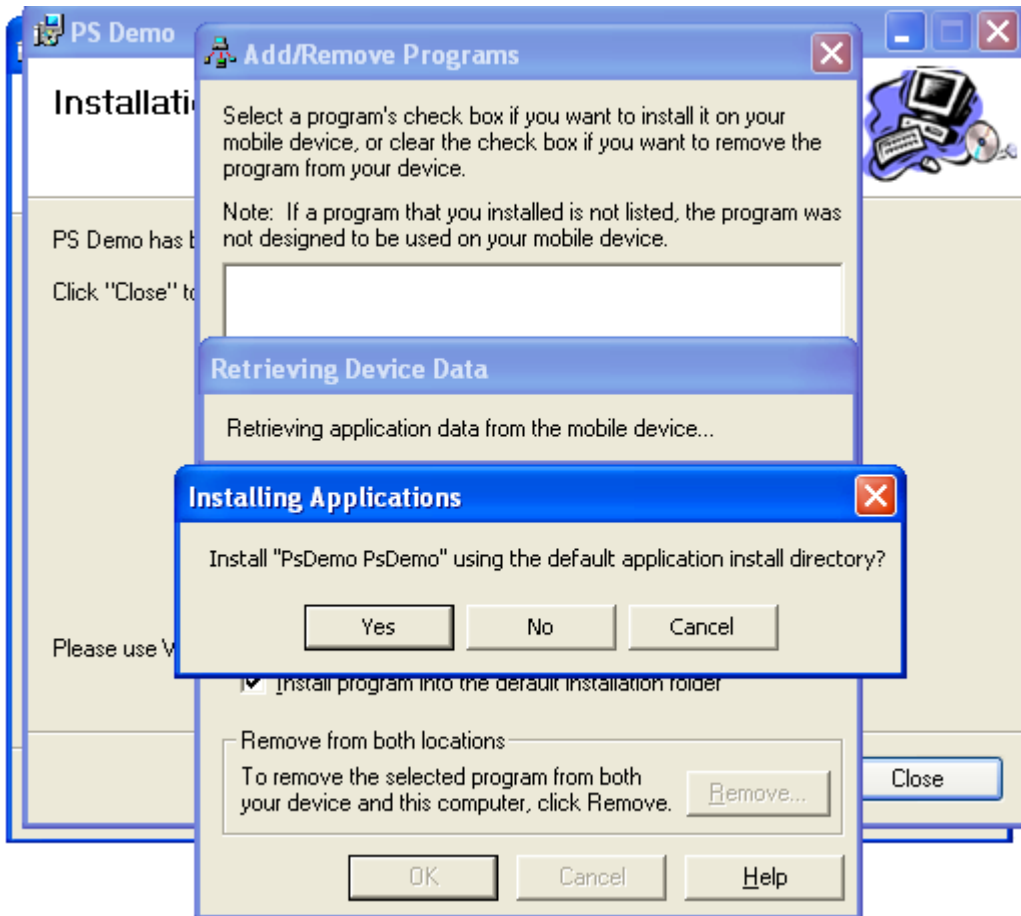


Figure2: Press <Yes> to proceed with the Installation on your **connected** device

After proceeding with the <Yes> button shown in figure2 your setup will be completed successfully.

Going on the device and firing the <Start Menu> you should be able to see in the programs list the Ps Demo icon as shown in figure3. Starting the application for the first time the user has to write the Storage's Card name in order for the application to establish a connection with the storage card. The user is able to see the storage card's name by entering the My Device icon on the hht's desktop. For safety reasons the data are stored automatically in the storage card so we avoid the danger of loosing data during a battery failure or even during a fall of the device on the floor.

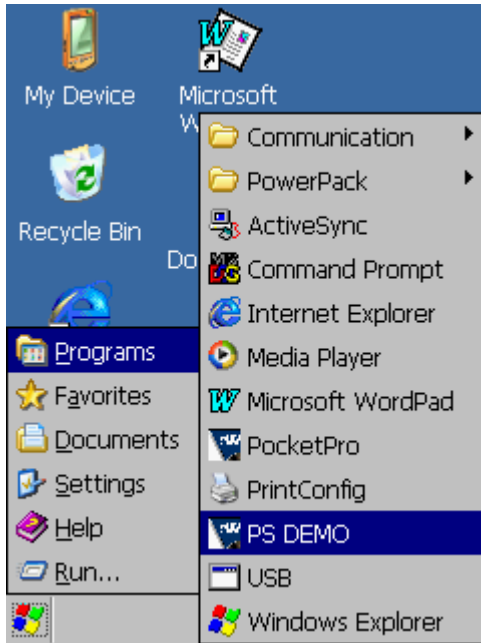


Figure3: “In the Start Menu / Programs the user will locate the PS Demo just installed”

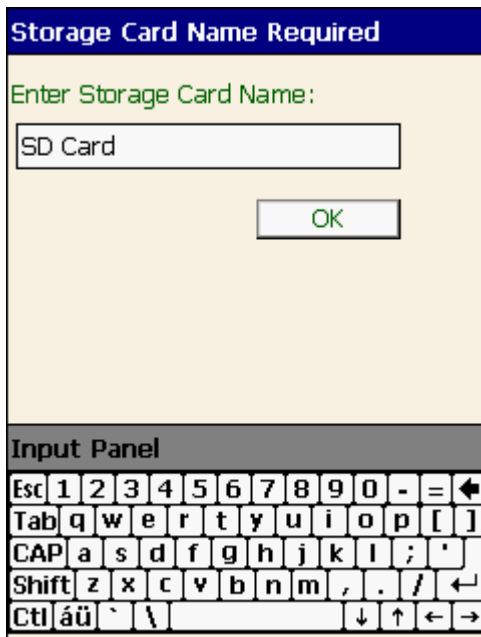


Figure4: “Entering the application for the first time, the user will have to enter the Storage Card’s name”

After entering the storage card's name Main Menu screen will be displayed giving the to the user the option to access Customers, Items, Stock Taking or even Point Of Sales module.



Figure5: Main menu

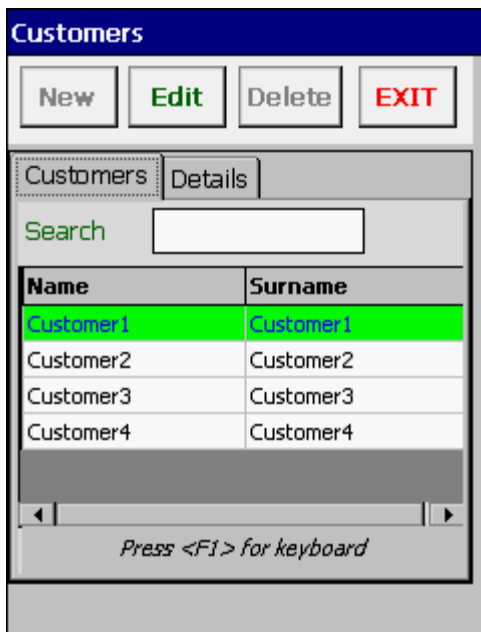


Figure6: Customers

The screenshot shows a window titled "Products" with a dark blue header. Below the header are four buttons: "New", "Edit", "Delete", and "EXIT". The main area contains a table with two tabs: "Products" (selected) and "Details". The table has three columns: "Code", "Description", and "Price". The first row, "BR BEER 2.30", is highlighted in green. Other rows include "OR Orange Juice 2.30", "APL Apple Juice 2.30", "WT Water 0.5 L 1.10", "05 Apple Pie 3.45", "06 Cheese Pie 3.45", "07 Pistachio 5.40", and "08 Vanilla 5.40". A scrollbar is visible on the right side of the table. At the bottom of the window, there is a text prompt: "Press <F1> for keyboard".

Code	Description	Price
BR	BEER	2.30
OR	Orange Juice	2.30
APL	Apple Juice	2.30
WT	Water 0.5 L	1.10
05	Apple Pie	3.45
06	Cheese Pie	3.45
07	Pistachio	5.40
08	Vanilla	5.40

Figure7: Products

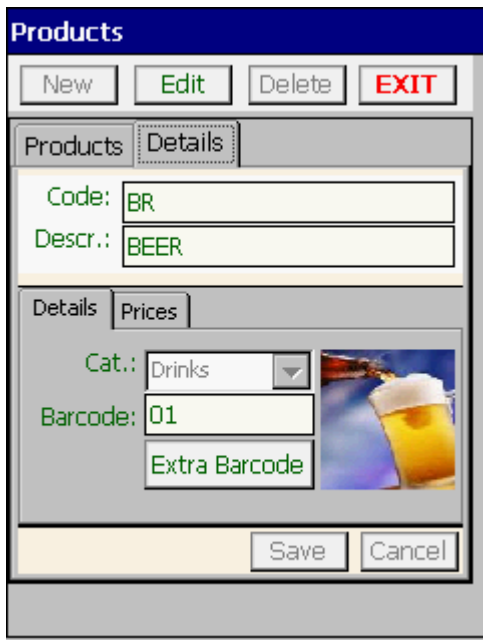


Figure8: Product Details



Figure8: Point Of Sales screen

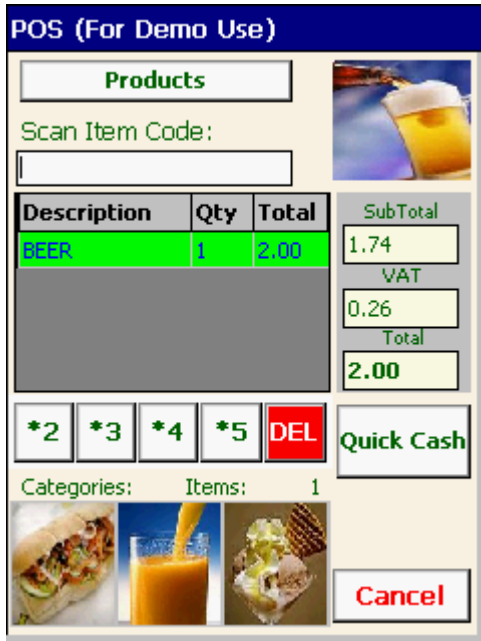


Figure9: Scan ANY Item
 Since this is a demo HHT will recognize only the last Code of the barcode and will display 1 of the 10 products That are already in the system

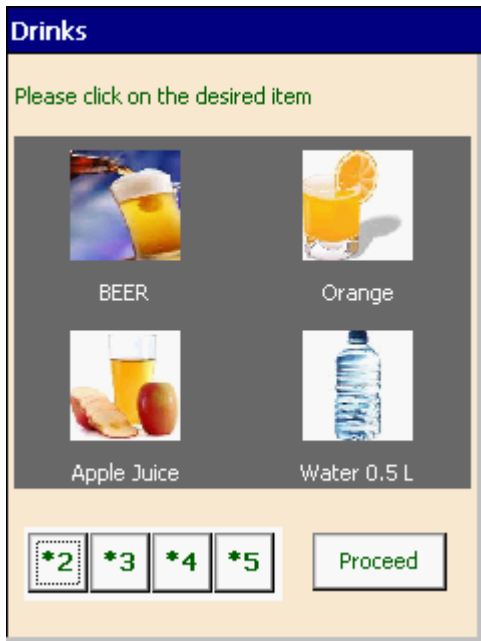


Figure9: If you click on the icons Products' Categories screen will open And you can click on it



Figure9: Stock Taking screen

Scan ANY item

Since this is a demo HHT will recognize only the last Code of the barcode and will display 1 of the 10 products That are already in the system